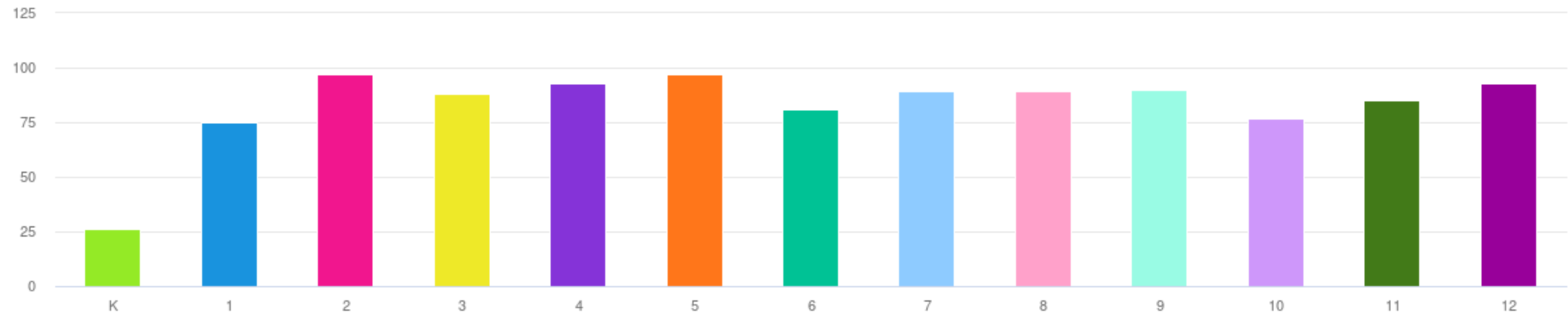
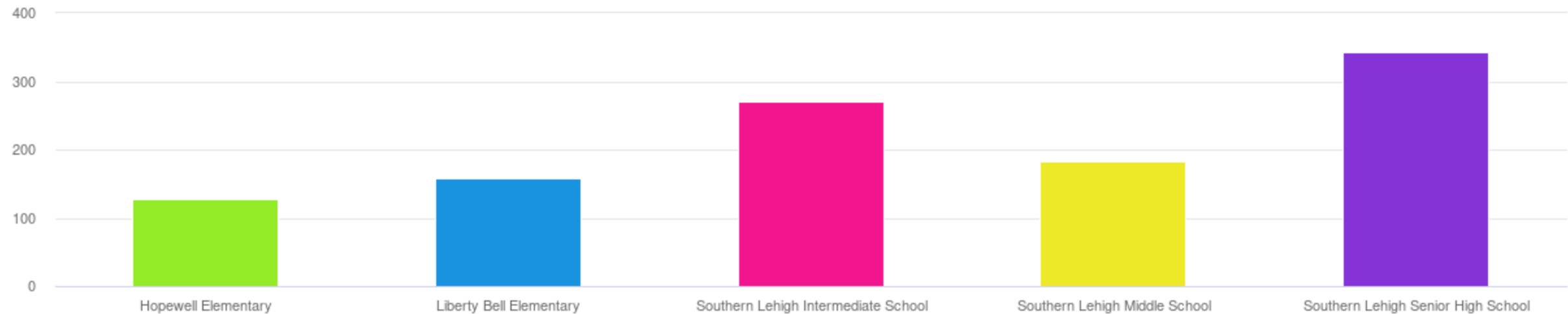


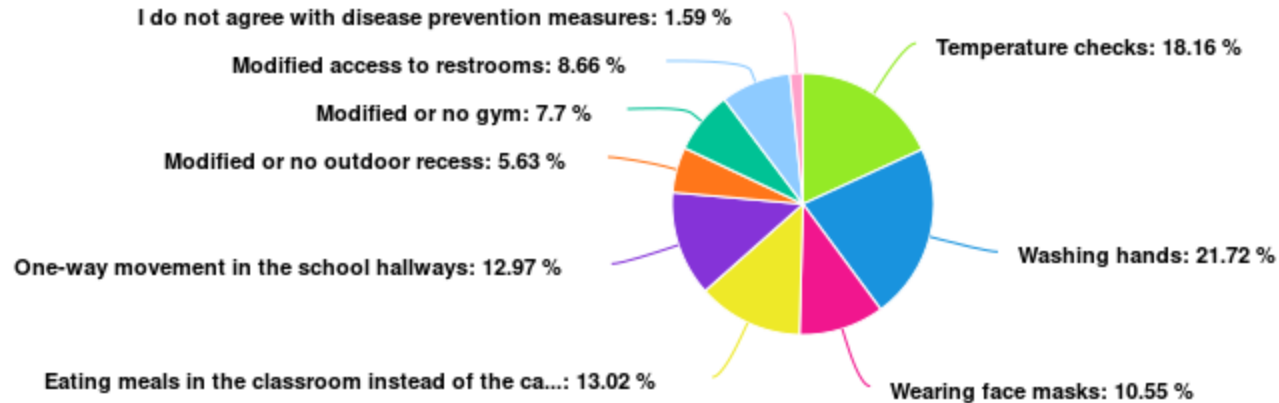
During the 2020-2021 school year, my child will be enrolled in:



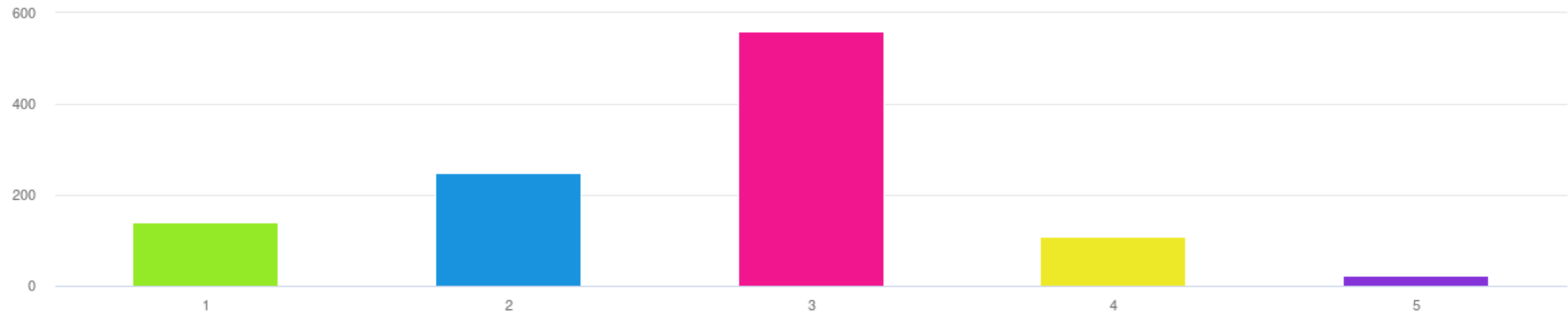
During the 2020-2021 school year, my child will be enrolled in:



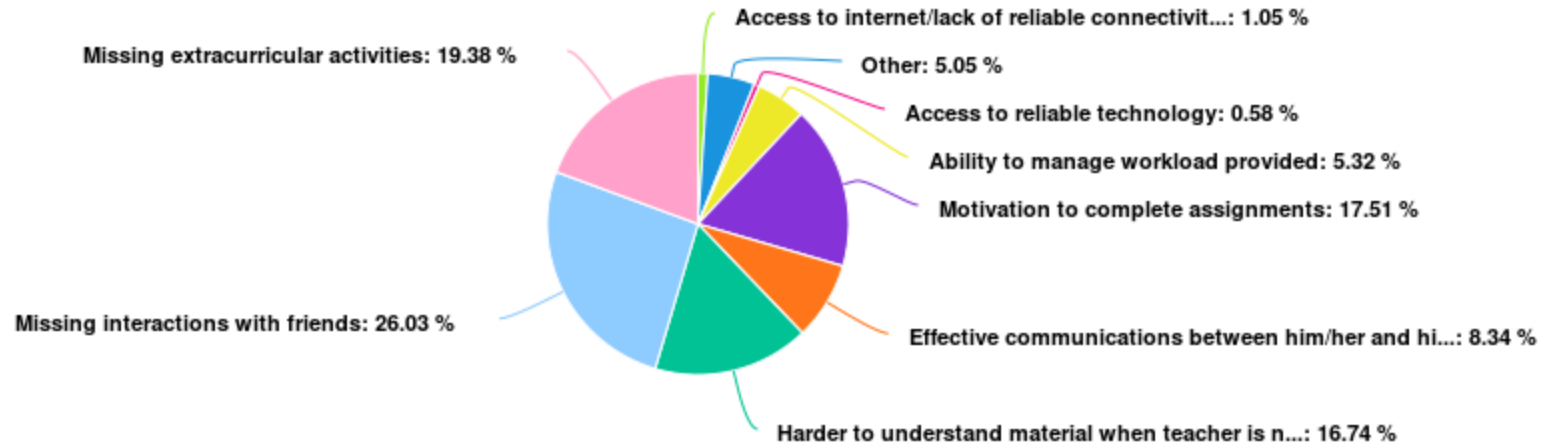
The school district is considering the following disease prevention measures. Please indicate your agreement with each option by checking the boxes below:



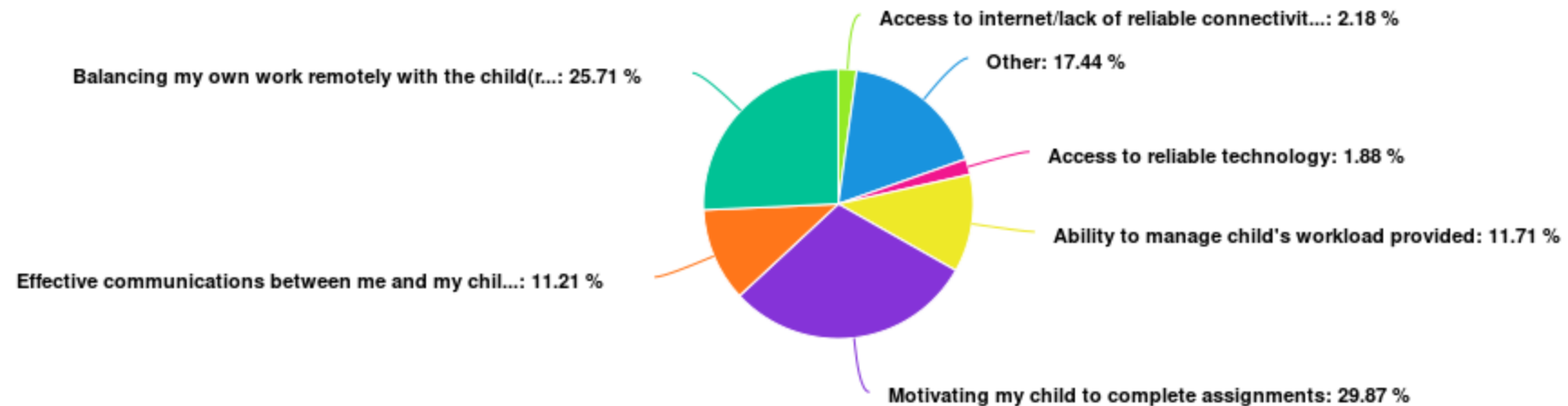
How would you rate the daily amount of work that your child is completing on average each day?



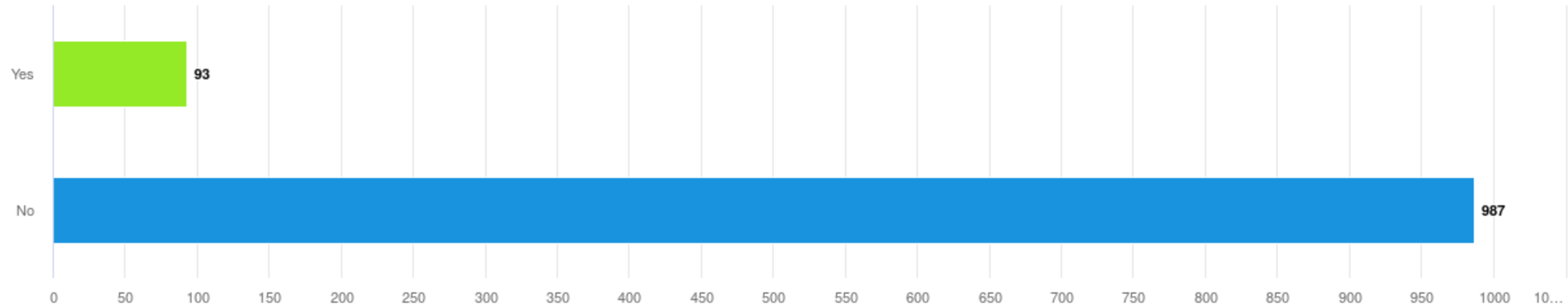
What is your child struggling with most regarding his/her experience with online learning?



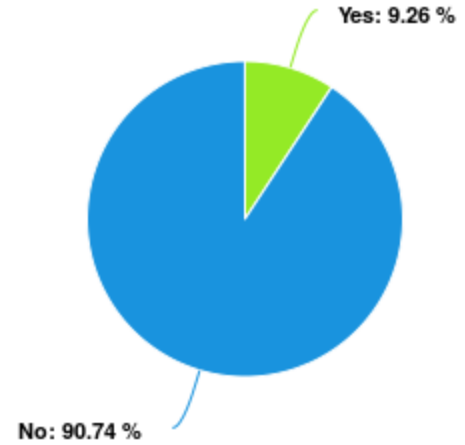
As a parent/guardian, what are you struggling with most regarding your child's experience with online learning?



Do you or your child need assistance/training on how to access the online platforms for remote learning?

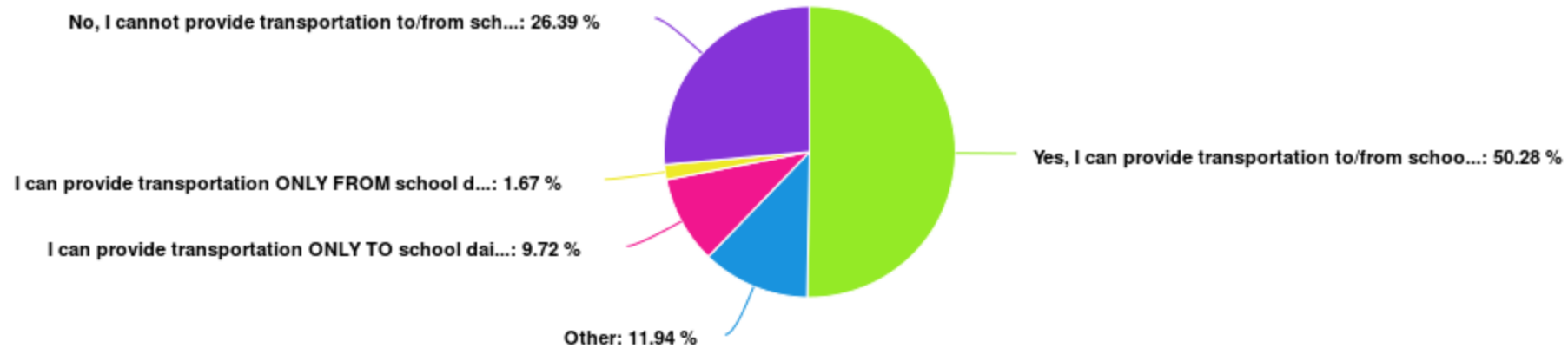


Should any form of online learning continue in the Fall of 2020, will you need a hotspot device provided to you/your family?





In order to implement social distancing on a school bus (should it be required), we are asking if you are able to provide transportation to/from school for your child daily



If the Fall of 2020 continues to have some safety restrictions required, which option would you choose for your child? (Select all that apply)

